



**Nelson Grove Road
London, SW19 2FD**

Edward Chase are glad to present to the residential lettings market a 3 bedroom 2 bathroom apartment located a short distance from South Wimbledon Station. This unique property features 3 spacious bedrooms, balcony reception with open plan living plan. This property has many key features such as: - Gas central heating - Double glazed windows - Open plan kitchen reception with balcony - Three bedrooms - Two bathrooms - White goods - Park furnished - South Wimbledon Station - Excellent condition throughout Please contact Edward Chase to view today. Lettings Edward Chase estate agents offer a bespoke, professional, ARLA accredited Lettings & Management service. If you would like a free property appraisal to gauge the rental potential of your property or you are considering a buy to let purchase, please feel free to contact Sukhbir Basra, Branch Manager to arrange an appointment. Edward Chase estate agents specialize in Ilford,



- Amazing 3 Bedroom Apartment With 2 Bathrooms & Open Plan Layout
- Gas Central Heating, Double Glazed Windows, Storage Throughout
- EPC Rating C, Council Tax Band E, Borough Of Merton
- Property Is Walking Distance To South Wimbledon Station & Local Amenities
- This Property Is Bright & Spacious Excellent Choice For Sharers Or Families
- Property Is Rented Part Furnished On The Long Term Basis

Monthly Rental Of £1,799

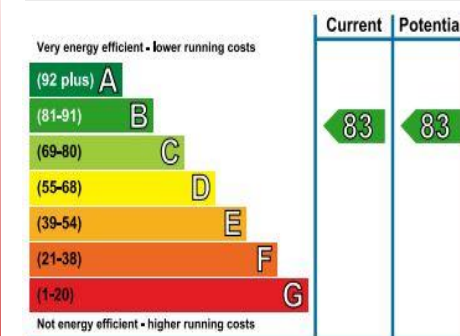
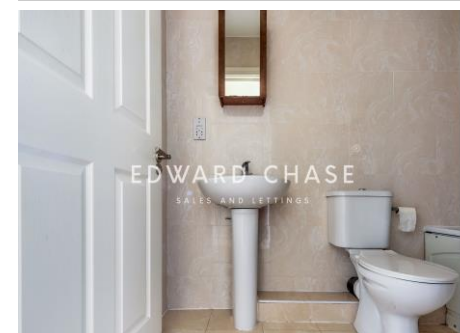
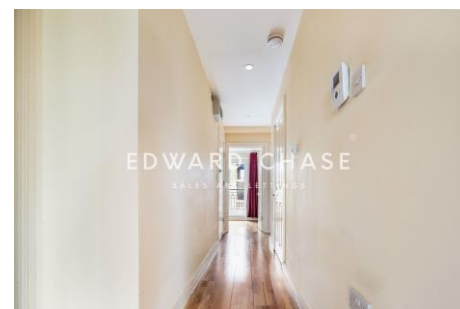
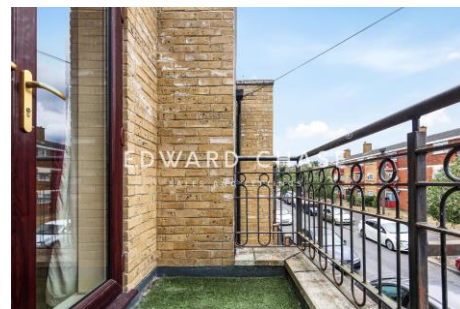
Nelson Grove Road London, SW19 2FD

Monthly Rental Of £1,799

Edward Chase are glad to present to the residential lettings market a 3 bedroom 2 bathroom apartment located a short distance from South Wimbledon Station. This unique property features 3 spacious bedrooms, balcony reception with open plan living plan. This property has many key features such as: - Gas central heating - Double glazed windows - Open plan kitchen reception with balcony - Three bedrooms - Two bathrooms - White goods - Park furnished - South Wimbledon Station - Excellent condition throughout Please contact Edward Chase to view today.

Lettings Edward Chase estate agents offer a bespoke, professional, ARLA accredited Lettings & Management service. If you would like a free property appraisal to gauge the rental potential of your property or you are considering a buy to let purchase, please feel free to contact Sukhbir Basra, Branch Manager to arrange an appointment. Edward Chase estate agents specialize in Ilford, Redbridge, Seven Kings, Goodmayes, Chadwell

Heath, Newbury Park, Barkingside, Chadwell Heath, Barking, Canary Wharf, Romford, Dagenham, Newham, Royal Wharf and the surrounding East London vicinity.



MONEY LAUNDERING REGULATIONS 2003

Intending purchasers will be asked to produce identification and proof of financial status when an offer is received. We would ask for your co-operation in order that there will be no delay in agreeing the sale.